

Introduction

DEPA[®] Air Operated Diaphragm pumps

- DH15-40 in PTFE and
- DH15-40 in PTFE electrically conductive



Advantages

CRANE[®]

DEPA[®] Air Operated Diaphragm pumps
DH15-40 in PTFE and PTFE electrically conductive

Advantages at a glance:

- Bolted design without clamp bands
- Design appropriate to the material; avoidance of cold flow
- No deformation under pressure
- Lateral connections
 - after disconnecting the pump from the pipework no medium residue will drop down on pump body
 - space-saving inline assembly is possible
- One-piece manifold without bonded or welded joints
- Better flow rate due to less direction changes
- One-piece PTFE compound diaphragm
 - without external piston
 - optimised design and geometry
 - smooth surface
- Only one size diaphragms for DH15-DH40, that means low stock and spare costs
- Extra low frequency and minor stroke leading to extended life time
- Internal air valve because of a better protection against environmental effects
- Centre block in PP supporting stability and rigidity



Nickel-plated valve



Diaphragm

Crane Process Flow Technologies GmbH
Postfach 11 12 40, D-40512 Düsseldorf
Heerdter Lohweg 63-71, D-40549 Düsseldorf
Telefon +49 211 59 56-0, Telefax +49 211 59 56-111
info.germany@craneflow.com
www.craneflow.com

Applications

CRANE[®]

DEPA[®] Air Operated Diaphragm pumps
DH15-40 in PTFE and PTFE electrically conductive

Main application:

- Chemical Industry



Crane Process Flow Technologies GmbH
Postfach 11 12 40, D-40512 Düsseldorf
Heerdter Lohweg 63-71, D-40549 Düsseldorf
Telefon +49 211 59 56-0, Telefax +49 211 59 56-111
info.germany@craneflow.com
www.craneflow.com

Curves DEPA® Air Operated Diaphragm pumps

SERIE / SERIES: PT / TL

Membrane / Diaphragm:

Steuerventil / Air valve:

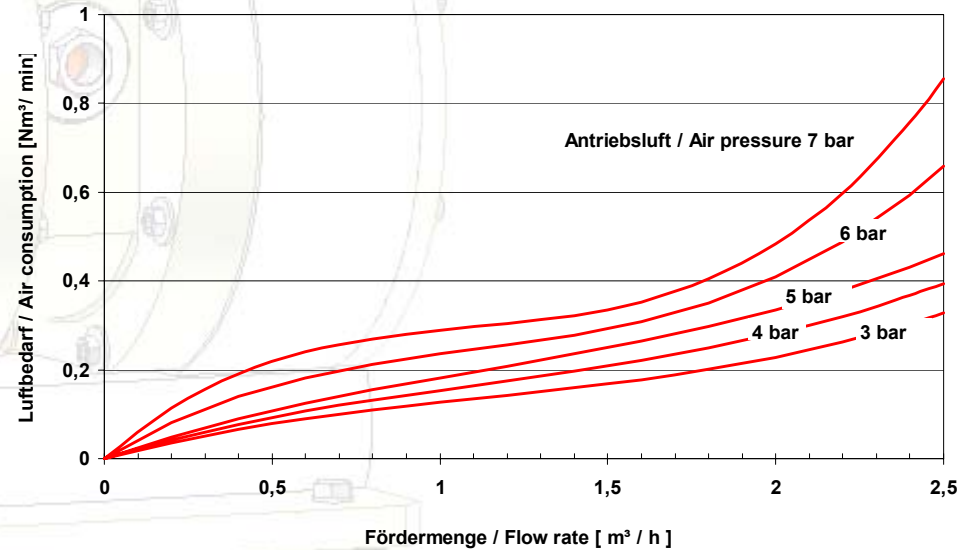
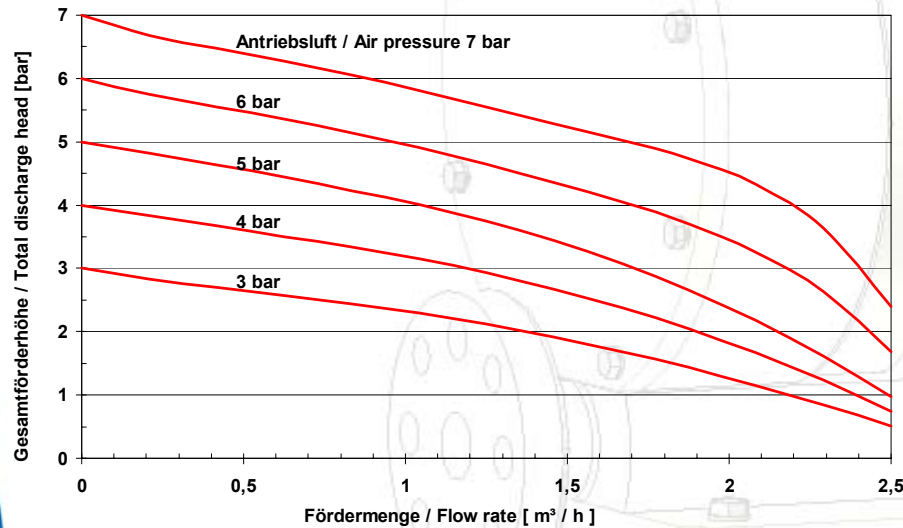
TYP / TYPE: DH15

Elastomer

Internal

PTFE

External



Curves DEPA[®] Air Operated Diaphragm pumps

SERIE / SERIES: PT / TL

Membrane / Diaphragm:

Steuerventil / Air valve:

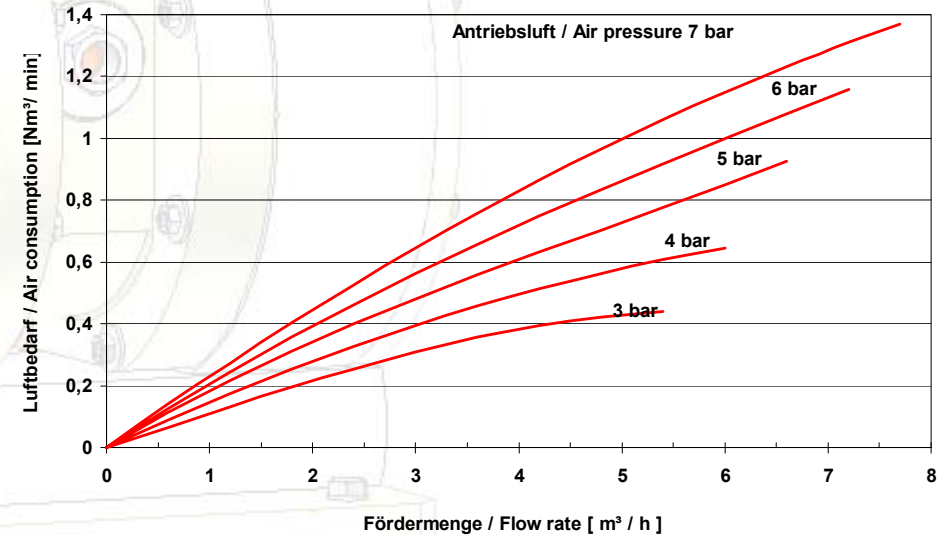
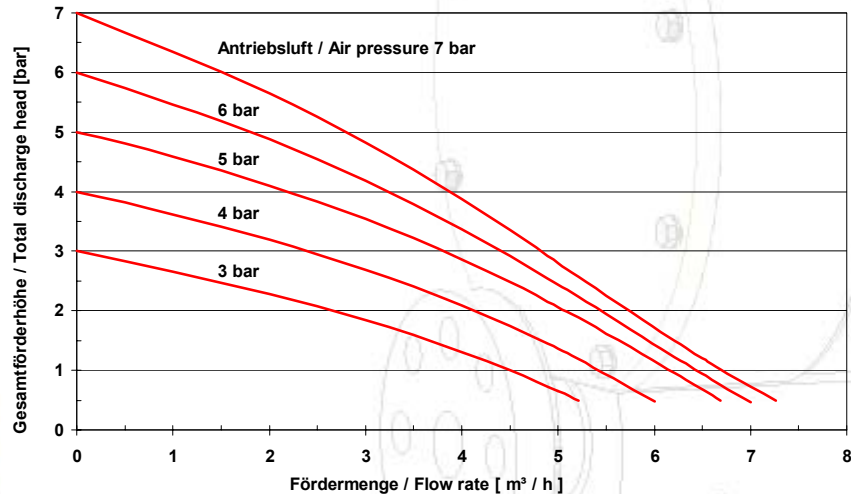
TYP / TYPE: DH25

Elastomer

Internal

PTFE

External



Curves DEPA[®] Air Operated Diaphragm pumps

SERIE / SERIES: PT / TL

Membrane / Diaphragm:

Steuerventil / Air valve:

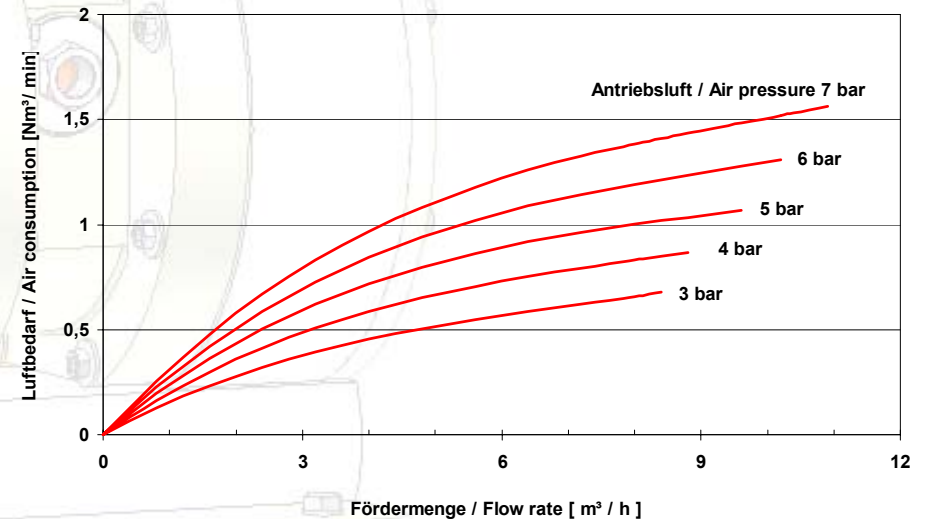
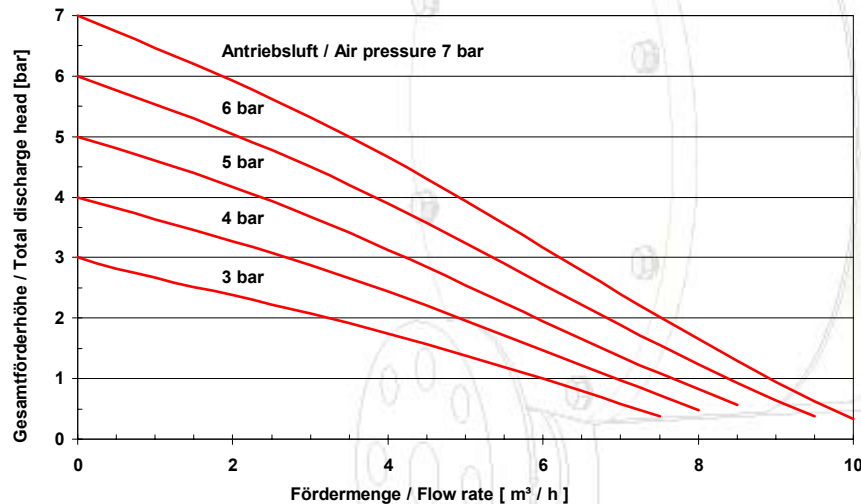
TYP / TYPE: DH40

Elastomer

Internal

PTFE

External



Technical Specification



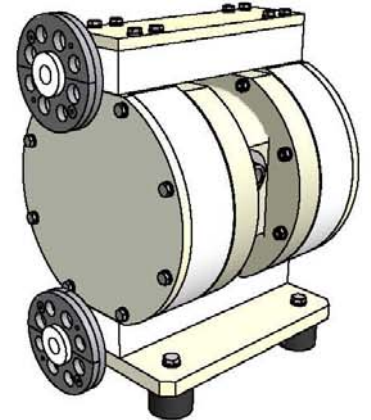
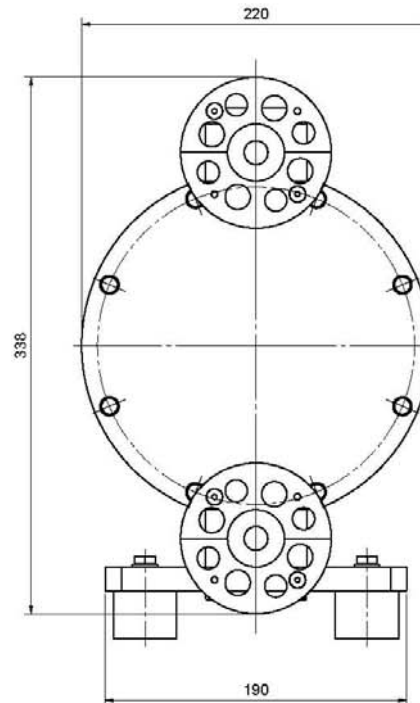
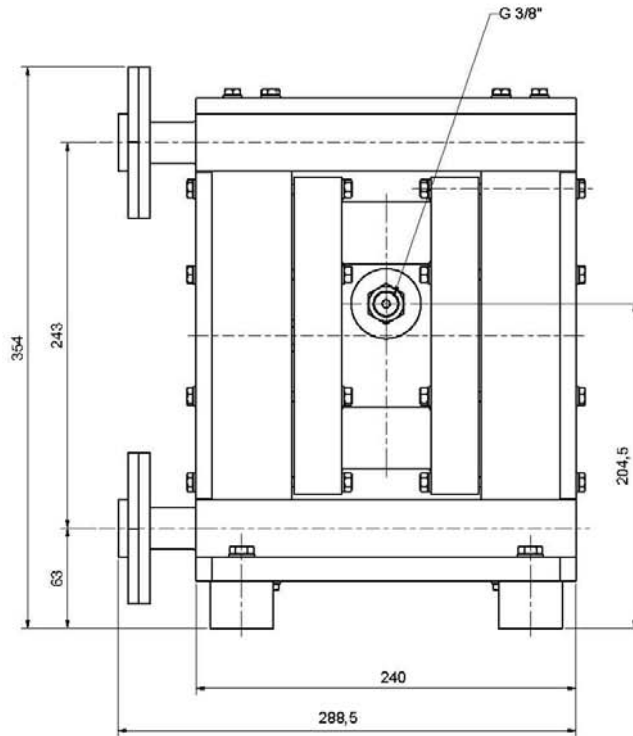
DEPA® Air Operated Diaphragm pumps

DH15-40 in PTFE and PTFE electrically conductive

	PTFE Pump DH15		PTFE Pump DH25		PTFE Pump DH40	
	Standard	Option	Standard	Option	Standard	Option
Product wetted parts						
Housing material	PTFE	PTFE el. cond.	PTFE	PTFE el. cond.	PTFE	PTFE el. cond.
Diaphragm	PTFE/EPDM		PTFE/EPDM		PTFE/EPDM	
Valve seat (not separately)	PTFE	PTFE el. cond.	PTFE	PTFE el. cond.	PTFE	PTFE el. cond.
Valve ball	PTFE (glass filled)		PTFE (glass filled)		PTFE (glass filled)	
Suction/discharge conn.	PTFE	PTFE el. cond.	PTFE	PTFE el. cond.	PTFE	PTFE el. cond.
Product temperature (max.)	110°C		110°C		110°C	
Non-wetted parts						
Centre block	PPH2222		PPH2222		PPH2222	
Air valve (internal)	brass / brass nickel plated with FKM O-rings		brass / brass nickel plated with FKM O-rings		brass / brass nickel plated with FKM O-rings	
Suction lift max.	ca. 2mWS dry ca. 9mWS filled with product		ca. 2mWS dry ca. 9mWS filled with product		ca. 2mWS dry ca. 9mWS filled with product	
Solid size max.	3,5 mm		6,5 mm		8,0 mm	
Air supply	G3/8"		G3/8"		G3/8"	
Air pressure max.	7 bar		7 bar		7 bar	
Weight	16 kg		21 kg		32 kg	



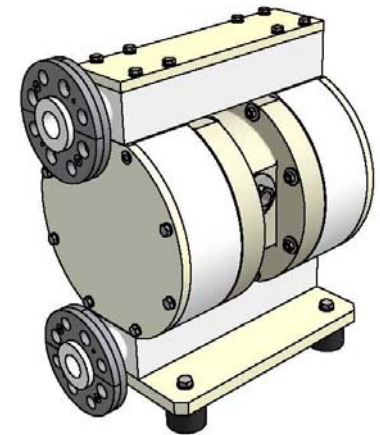
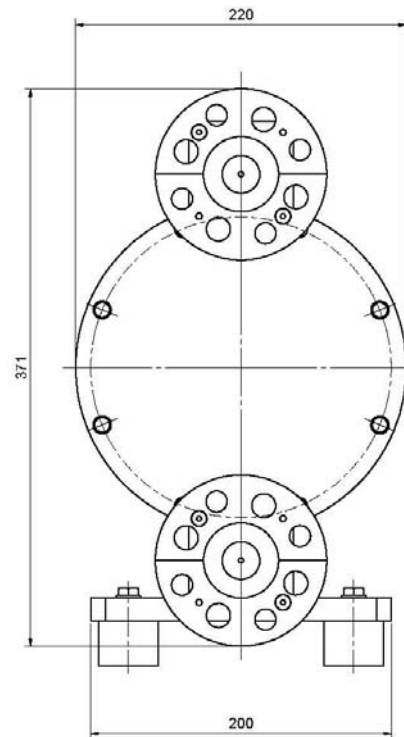
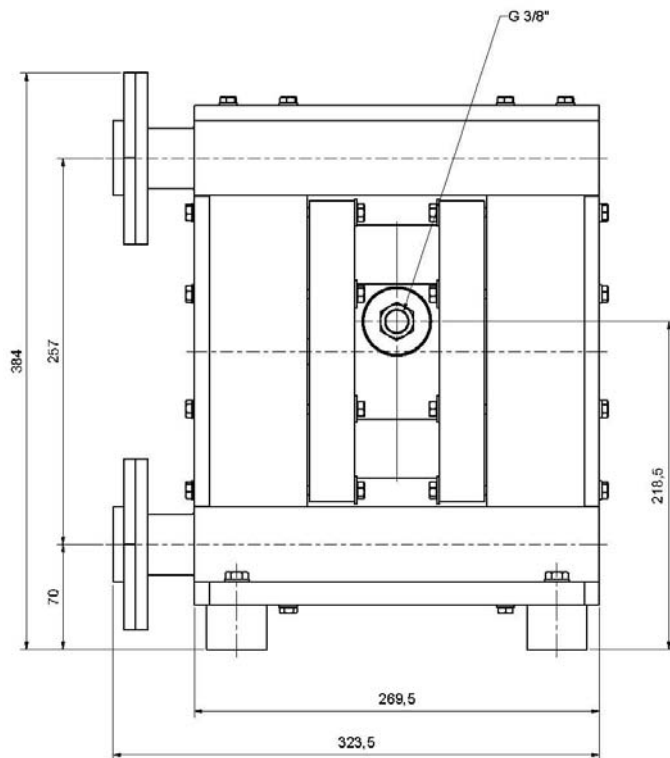
CRANE



DEPA® Druckluft-Membranpumpen, Serie P
DEPA® Air Operated Diaphragm pumps, Series P

Typ(e): DH15-PT mit Kombiflansch DIN / ANSI
DH15-PT with combi-flange DIN / ANSI

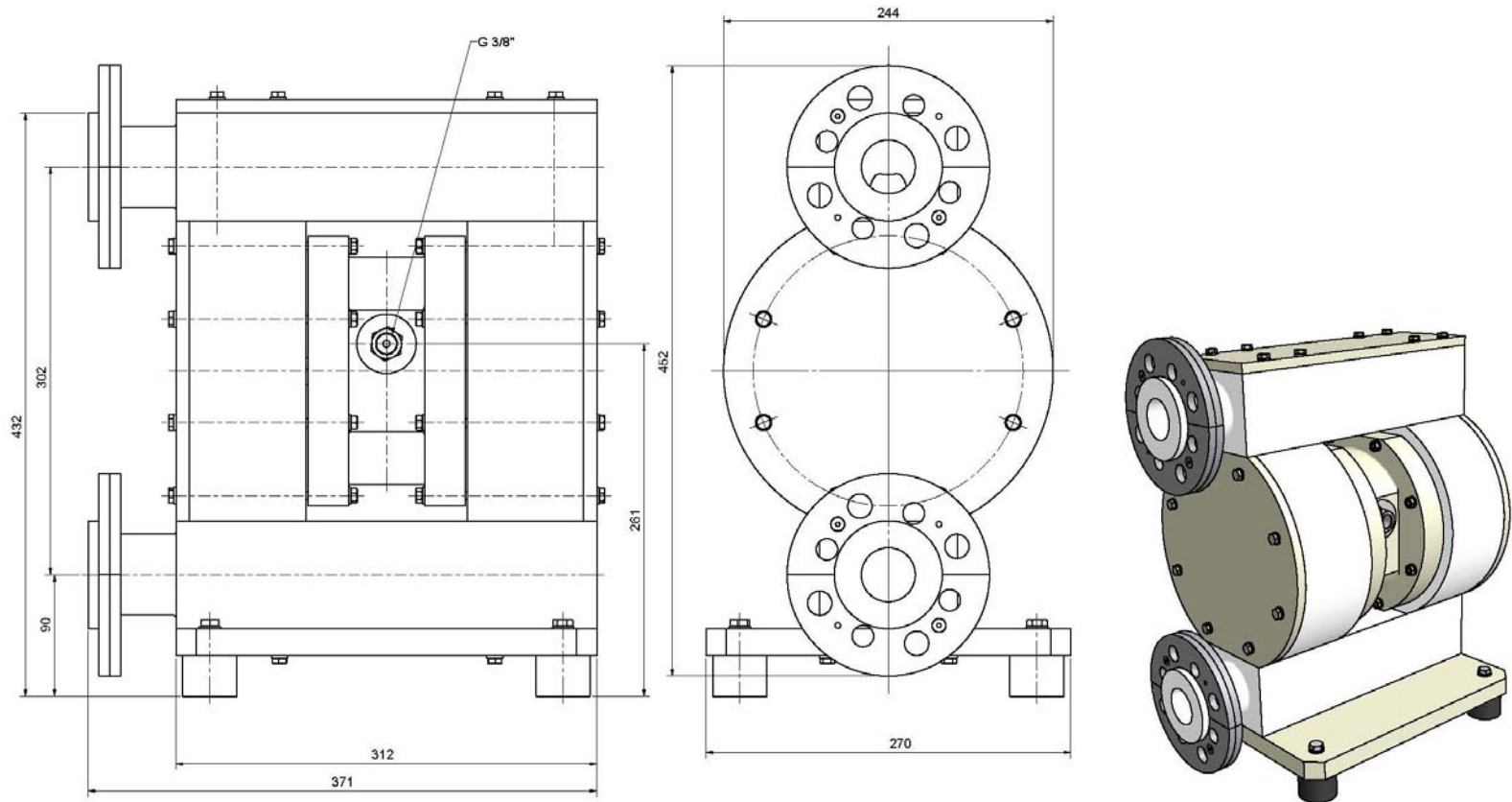
Material: PTFE und PTFE elektrisch leitfähig
PTFE and PTFE electrically conductive



DEPA® Druckluft-Membranpumpen, Serie P
DEPA® Air Operated Diaphragm pumps, Series P

Typ(e): DH25-PT mit Kombiflansch DIN / ANSI
DH25-PT with combi-flange DIN / ANSI

Material: PTFE und PTFE elektrisch leitfähig
PTFE and PTFE electrically conductive



DEPA® Druckluft-Membranpumpen, Serie P
DEPA® Air Operated Diaphragm pumps, Series P

Typ(e): DH40-PT mit Kombiflansch DIN / ANSI
DH40-PT with combi-flange DIN / ANSI

Material: PTFE und PTFE elektrisch leitfähig
PTFE and PTFE electrically conductive